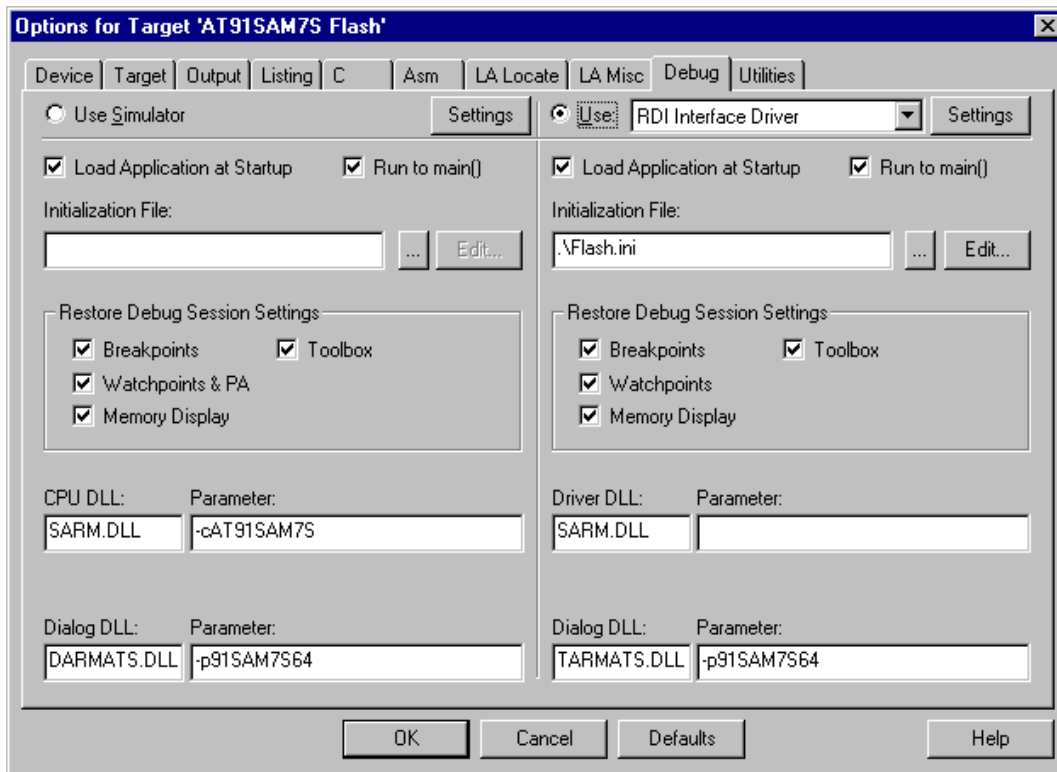
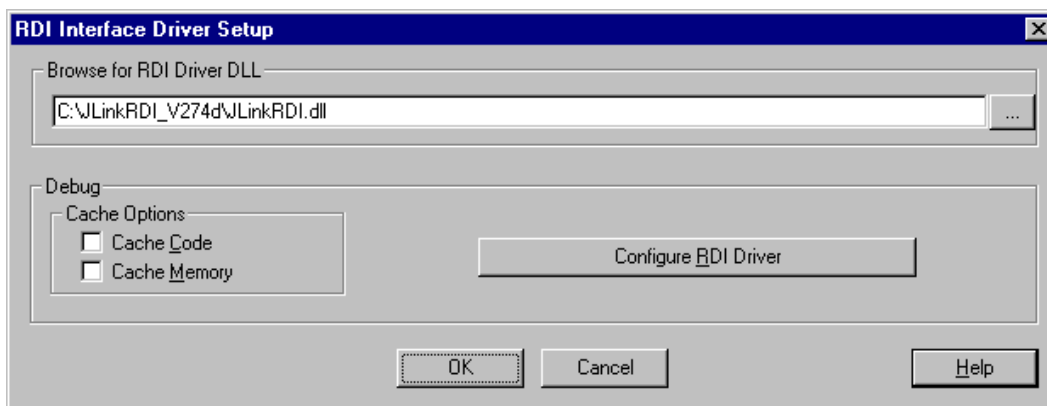


## Settings for AT91SAM7S64 and KEIL uVision3.

1. Double-click project file (“Blinky.uv2”).
2. Select target “AT91SAM7S Flash”.
3. Open the project options dialog (Menu – Project – Options for Target)
4. Make sure settings are as shown below:



5. Browse to your RDI DLL:



## 6. Select “Configure RDI Driver”

## 7. Make sure the settings are as shown below.

The image displays four screenshots of the J-Link RDI Configuration dialog box, showing different tabs and their settings.

**General Tab:** Shows the J-Link RDI software description and connection options. The connection is set to USB. The location of the config file is empty.

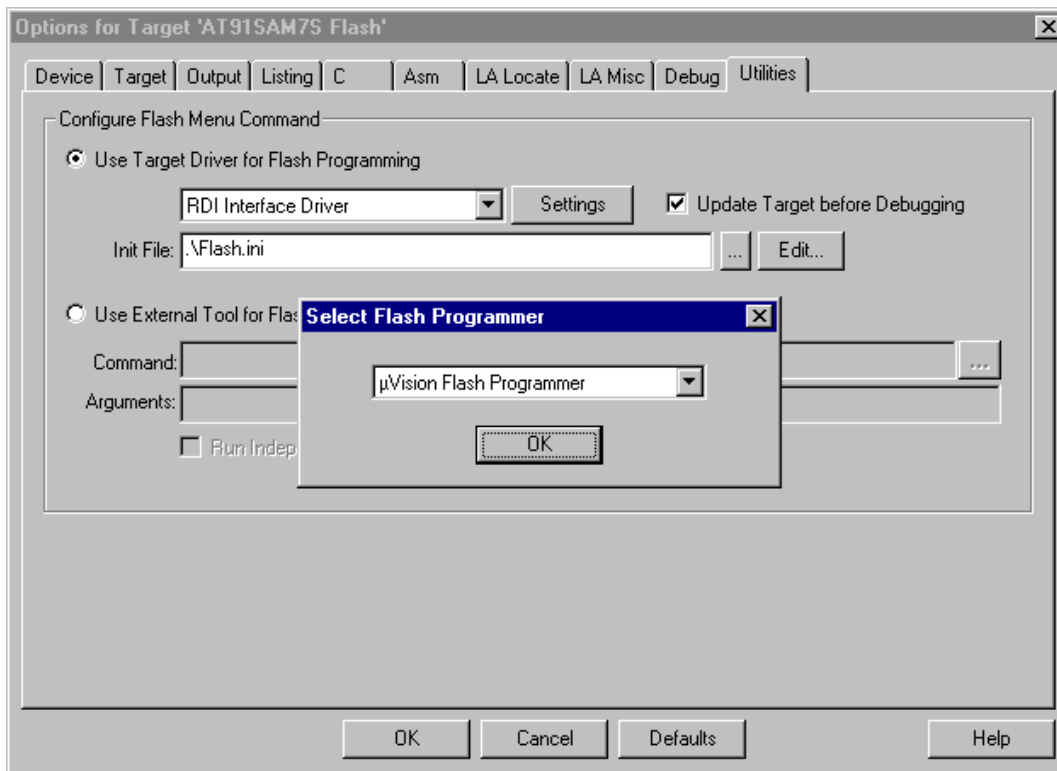
**JTAG Tab:** Shows JTAG speed settings. The speed is set to 100 kHz. The JTAG scan chain with multiple devices is disabled.

**Flash Tab:** Shows flash programming settings. The flash memory is set to Analog ADuC7026x62 (6 on). The flash size is 0x80000. The cache flash contents, allow flash download, and show info window during download options are checked.

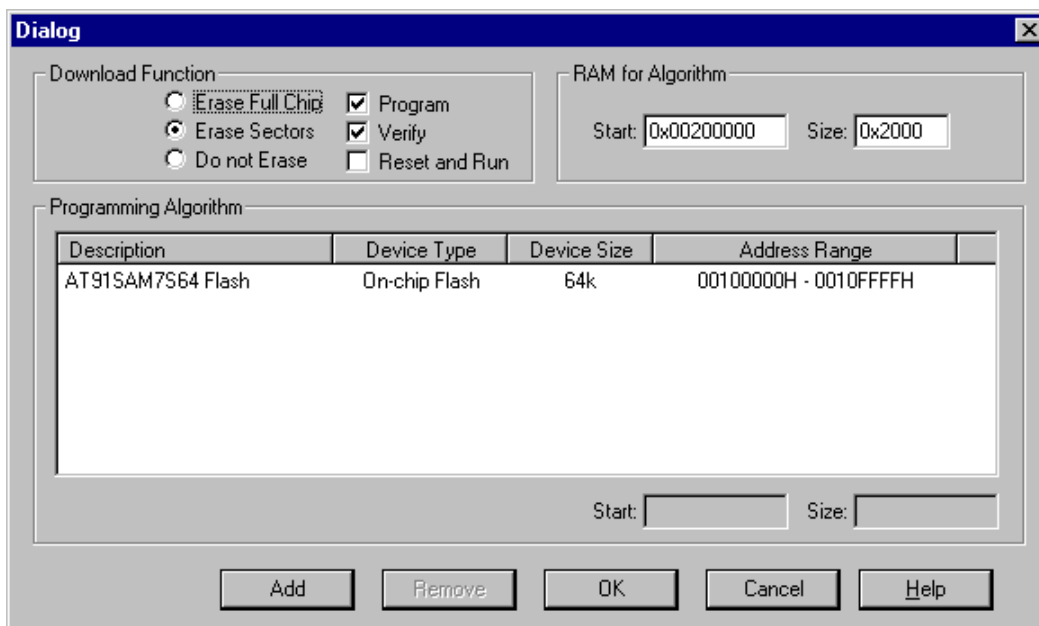
**Breakpoints Tab:** Shows breakpoint settings. The use software breakpoints, use flash breakpoints, and show info window during program options are checked.

**Reset strategy Tab:** Shows the reset strategy. The reset strategy is set to Hardware, halt after reset (normal).

8. Select „RDI Interface Driver“ as driver for flash programming.
9. Select “uVision Flash Programmer”



10. Make sure the settings are as shown below.



11. Build the target (Menu – Project – Rebuild all target files)
12. Start the debug session